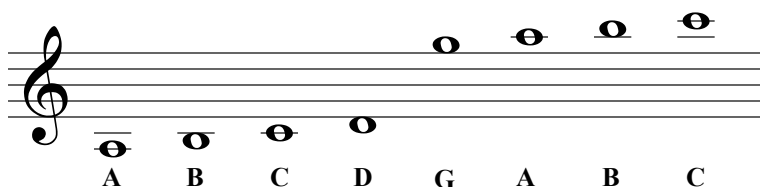


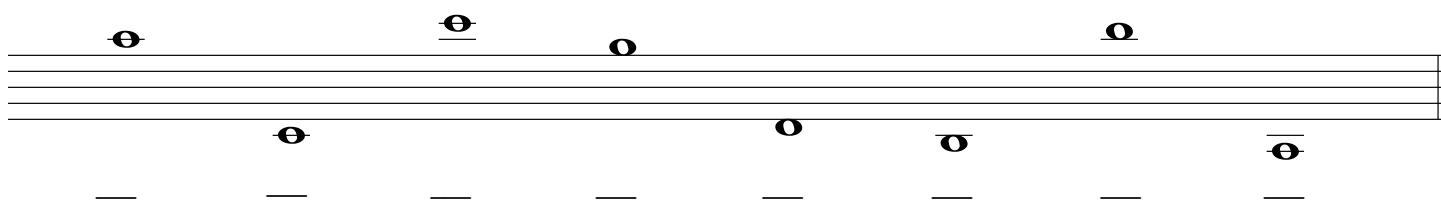
Treble Clef - Ledger Lines

Ledger lines can be used to extend the upper and lower ranges of a staff.

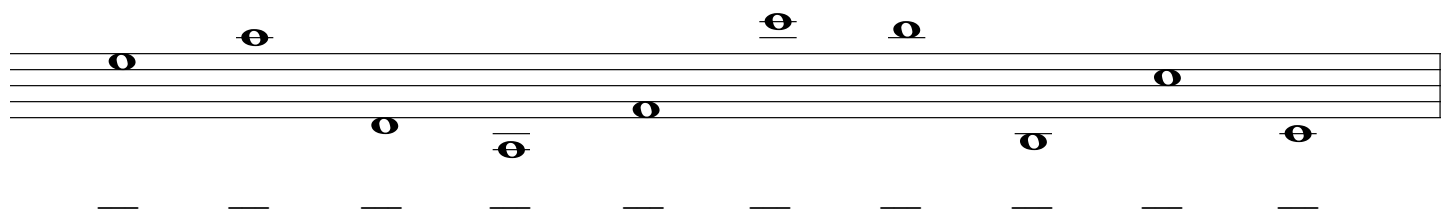
This example includes notes which can be written above and below the treble clef using **ledger lines**.



1. Draw a treble clef at the beginning of the staff and write the letter name of each note.

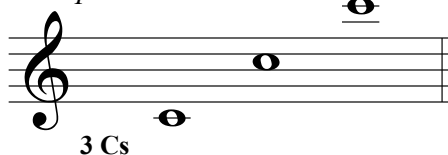


2. Draw a treble clef at the beginning of the staff and write the letter name of each note.

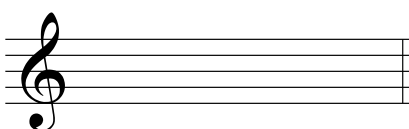


3. Draw the indicated notes. Use ledger lines to draw the specified number of pitches without duplication.

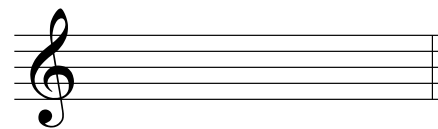
Example



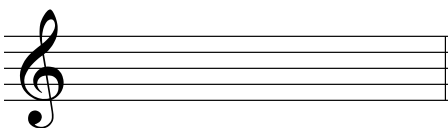
3 Cs



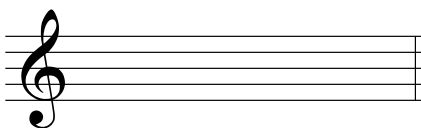
2 Ds



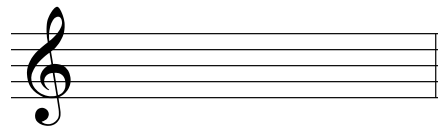
3 As



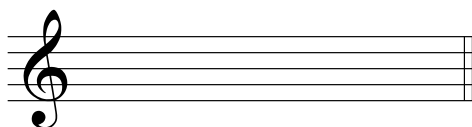
2 Es



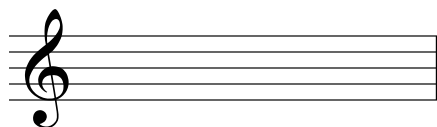
2 Fs



3 Bs



2 Gs



3 Cs